

Specifications

| Models | S-40 XC / S-40 TraX | | S-45 XC / S-45 TraX | |
|---|---------------------|-------------|---------------------|-------------|
| Measurements | Metric | US | Metric | US |
| Working height maximum* | 14.04 m | 45 ft 6 in | 15.56 m | 50 ft 6 in |
| Platform height maximum | 12.04 m | 39 ft 6 in | 13.56 m | 44 ft 6 in |
| Horizontal reach maximum | 9.47 m | 31 ft 1 in | 11.02 m | 36 ft 2 in |
| Below ground reach | 0.30 m | 1 ft | 1.27 m | 4 ft 2 in |
| A Platform length - 8 ft model | 0.91 m | 3 ft | 0.91 m | 3 ft |
| Platform length - 6 ft model | 0.76 m | 2 ft 6 in | 0.76 m | 2 ft 6 in |
| B Platform width - 8 ft model | 2.44 m | 8 ft | 2.44 m | 8 ft |
| Platform width - 6 ft model | 1.83 m | 6 ft | 1.83 m | 6 ft |
| C Height - stowed standard tyres | 2.51 m | 8 ft 3 in | 2.51 m | 8 ft 3 in |
| - stowed with TraX | 2.56 m | 8 ft 5 in | 2.56 m | 8 ft 5 in |
| D Length - stowed | 8.03 m | 26 ft 4 in | 9.47 m | 31 ft 1 in |
| Length - transport | 7.80 m | 25 ft 7 in | 7.37 m | 24 ft 2 in |
| E Width - standard tyres | 2.49 m | 8 ft 2 in | 2.49 m | 8 ft 2 in |
| - TraX option | 2.46 m | 8 ft 1 in | 2.46 m | 8 ft 1 in |
| F Wheelbase | 2.46 m | 8 ft 1 in | 2.46 m | 8 ft 1 in |
| G Ground clearance - center | 0.32 m | 1 ft 0.5 in | 0.32 m | 1 ft 0.5 in |
| - centre TraX | 0.30 m | 1 ft | 0.30 m | 1 ft |

Productivity

| | | | | |
|--------------------------------------|----------------------|------------|----------------------|------------|
| Lift capacity, restricted | 454 kg | 1,000 lbs | 454 kg | 1,000 lbs |
| Lift capacity, unrestricted | 300 kg | 660 lbs | 300 kg | 660 lbs |
| Platform rotation | 160° (70°/90°) | | 160° (80°/80°) | |
| Vertical jib rotation | ————— | | 133° (+79° /-54°) | |
| Turntable rotation | 360° continuous | | 360° continuous | |
| Turntable tailswing | 97 cm | 3 ft 2 in | 97 cm | 3 ft 2 in |
| Drive speed - 4WD stowed (on tyres) | 6.40 km/h | 4 mph | 6.40 km/h | 4 mph |
| Drive speed - 4WD stowed (with TraX) | 4.00 km/h | 2.5 mph | 4.00 km/h | 2.5 mph |
| Drive speed - raised or extended | 0.3 m/s | 1 ft/s | 0.3 m/s | 1 ft/s |
| Gradeability** stowed - 4WD | 45% | 45% | 45% | 45% |
| Turning radius - inside | 2.08 m | 6 ft 10 in | 2.08 m | 6 ft 10 in |
| - inside with TraX | 2.03 m | 6 ft 8 in | 2.03 m | 6 ft 8 in |
| Turning radius - outside | 5.23 m | 17 ft 2 in | 5.23 m | 17 ft 2 in |
| - outside with TraX | 5.18 m | 17 ft | 5.18 m | 17 ft |
| Controls | 12 V DC proportional | | 12 V DC proportional | |
| Tyres - RT foam filled | 315/55D20-12 ply | | 315/55D20-12 ply | |
| TraX - track system | Vermeer Track system | | Vermeer Track system | |
| Ground Pressure (with tyres) | 634 kPa | 92 psi | 634 kPa | 92 psi |
| Ground Pressure (with TraX) | 138 kPa | 20 psi | 152 kPa | 22 psi |

Power

| | | | | |
|-----------------------------|---|---------|---------|---------|
| Power source | Deutz D2011 L03i diesel, 3 cylinder 49hp (37kW) Stage IIIA Deutz TD2.2 L3 turbo diesel, 3 cylinder 49hp (37kW) Stage V | | | |
| Auxiliary power unit | 12 V DC | 12 V DC | 12 V DC | 12 V DC |
| Hydraulic tank capacity | 144 L | 38 gal | 144 L | 38 gal |
| Fuel tank capacity (Diesel) | 132 L | 35 gal | 76 L | 20 gal |

Sound & Vibration Levels

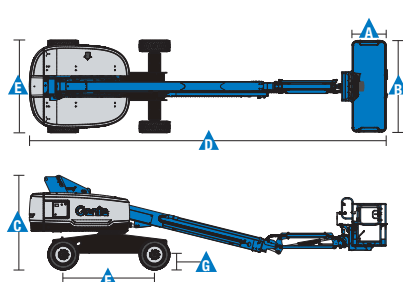
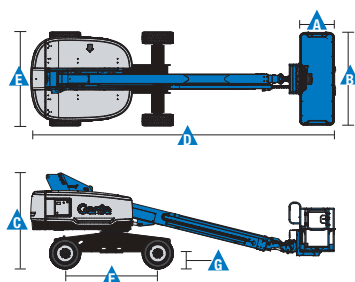
| | | | | |
|---|-----------------------|---------------------------|-----------------------|---------------------------|
| Sound pressure level (ground workstation) | 89 dBA | 89 dBA | 89 dBA | 89 dBA |
| Sound pressure level (platform workstation) | 77 dBA | 77 dBA | 77 dBA | 77 dBA |
| Vibration | <2.5 m/s ² | <8 ft 2 in/s ² | <2.5 m/s ² | <8 ft 2 in/s ² |

Weight***

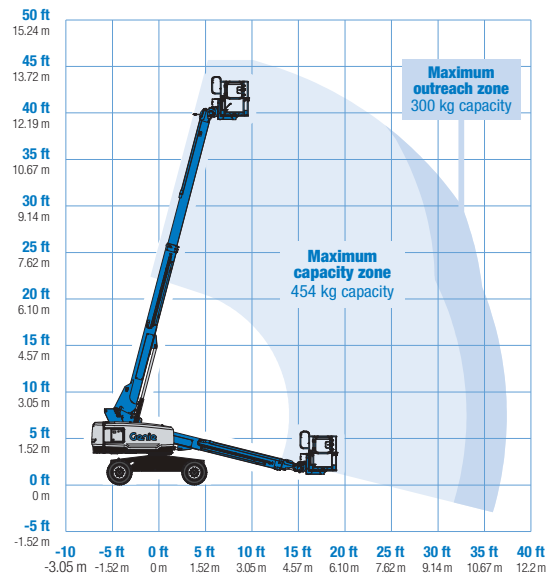
| | | | | |
|----------------------|----------|------------|----------|------------|
| CE Foam Filled tyres | 6,407 kg | 14,124 lbs | 7,394 kg | 16,300 lbs |
| Track system | 6,969 kg | 15,364 lbs | 7,956 kg | 17,540 lbs |

Standards Compliance

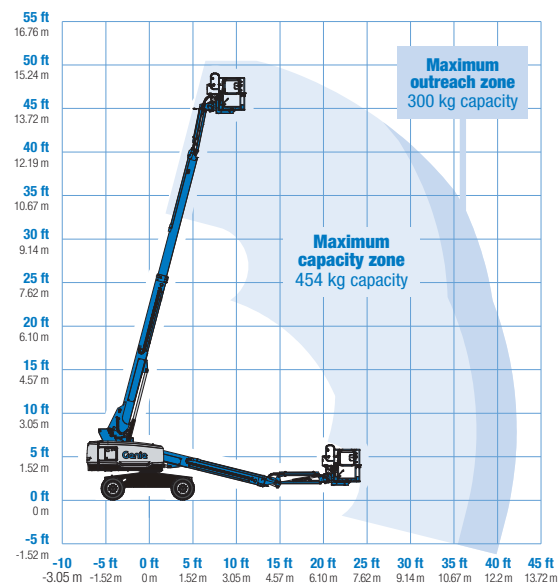
EU Directives: 2006/42/EC - Machinery (harmonized standard EN280:2013+A1:2015); 2004/108/EC (EMC); 2000/14/EC (Outdoor Noise)



Range of Motion S-40 XC / S-40 TraX



Range of Motion S-45 XC / S-45 TraX



* The metric equivalent of working height adds 2 m to platform height. U.S. adds 6 ft to platform height.

** Gradeability applies to driving on slopes. See operator's manual for details regarding slope ratings.

*** Weight will vary depending on options and/or country standards.

Features

| Standard Features | Easily Configured To Meet Your Needs | Options & Accessories |
|-------------------|--------------------------------------|-----------------------|
|-------------------|--------------------------------------|-----------------------|

Measurements

S-40 XC, S-40 TraX

- 14.04 m (45 ft 6 in) working height
- 9.70 m (31 ft 1 in) horizontal reach
- 300 kg (660 lbs) unrestricted and 454 kg (1,000 lbs) restricted lift capacity

S-45 XC, S-45 TraX

- 15.56 m (50 ft 6 in) working height
- 11.02 m (36 ft 2 in) horizontal reach
- 300 kg (660 lbs) unrestricted and 454 kg (1,000 lbs) restricted lift capacity

Productivity

- Automatic envelope control
- Self-leveling platform
- 160° hydraulic platform rotation
- Thumb rocker steering
- Proportional joystick controls
- Hydraulic oil cooler
- Drive enable system
- Chassis tilt drive function cut-out
- AC power cord to platform
- Horn
- Hour meter
- Descent and tilt alarm
- Flashing beacon & travel alarm
- 360° continuous turntable rotation
- Positive traction drive
- Two speed wheel motors
- On board full diagnostics and engine monitoring display
- Telematics ready connector
- Lift Guard[™] Contact Alarm
- Lift Connect[™] Telematics
- Lift Tool[™] Work Tray

Power

- 12 V DC auxiliary power
- Anti-restart engine protection
- Auto engine fault shutdown
- Intake air heater
- Engine gauge package

Platform Options

- Steel 1.83 m (6 ft) dual-entry platform with side swing gate
- 2.44 m (8 ft) tri-entry platform with side swing gate (standard)

Jib Options

- Non-jib
- 1.52 m (5 ft) articulating jib boom

Engine Options

- Deutz D2011 L03i diesel, 3 cylinder 49hp (37kW) Stage IIIA
- Deutz TD2.2 L3 turbo diesel, 3 cylinder 49hp (37kW) Stage V

Drive

- 4 x 4

Axle

- Active oscillation

Tyre Options

- Rough terrain foam-filled (standard on Tyres)
- Rough terrain non-marking foam-filled (optional on Tyres)
- Vermeer Track system (standard on TraX)

Productivity Options

- Lift Guard[™] Half mesh platform panels⁽¹⁾
- Platform auxiliary top rail
- Airline to platform⁽¹⁾
- Power to platform: plug, socket, with optional Residual-current Circuit Breaker with Overcurrent protection⁽²⁾
- Lights package (2 on chassis, 2 on platform)⁽¹⁾
- Biodegradable hydraulic oil⁽¹⁾
- Hostile environment kit⁽¹⁾: cylinder bellows, boom wiper seals, platform and ground control box cover
- Chassis tilt lift function cut-out kit
- Panel cradle package⁽¹⁾
- Lockable platform & ground control box covers
- Techpro Link[™] diagnosis and troubleshooting system

Power Options

- Lift Power[™] 3kW AC generator, 110V/50Hz or 220V/50Hz
- EMEAR Cold Start kit: Inc. Engine heater & battery charger
- Diesel catalytic scrubber muffler⁽¹⁾
- Positive air shutdown system



⁽¹⁾ Factory-fit option only

⁽²⁾ Not available if a generator is selected



Jøma Lift Teknik A/S

Nordager 24, DK 6000 Kolding, Denmark. Tel: +45 75864333 Email: info@genielift.dk www.Genielift.dk

Worldwide Manufacturing And Distribution

Australia · Brazil · Caribbean · Central America · China · France · Germany · Italy · Japan · Korea · Mexico · Russia · Southeast Asia · Spain · Sweden · United Arab Emirates · United Kingdom · United States

Product specifications and prices are subject to change without notice or obligation. The photographs and/or drawings in this document are for illustrative purposes only. Refer to the appropriate Operator's Manual for instructions on the proper use of this equipment. Failure to follow the appropriate Operator's Manual when using our equipment or to otherwise act irresponsibly may result in serious injury or death. The only warranty applicable to our equipment is the standard written warranty applicable to the particular product and sale and we make no other warranty, express or implied. Products and services listed maybe trademarks, service marks or trade names of Terex Corporation and/or their subsidiaries in the USA and many other countries. Genie is a registered trademark of Terex South Dakota, Inc. © 2020 Terex Corporation.