

Technical sheet :

# 200 ATJ

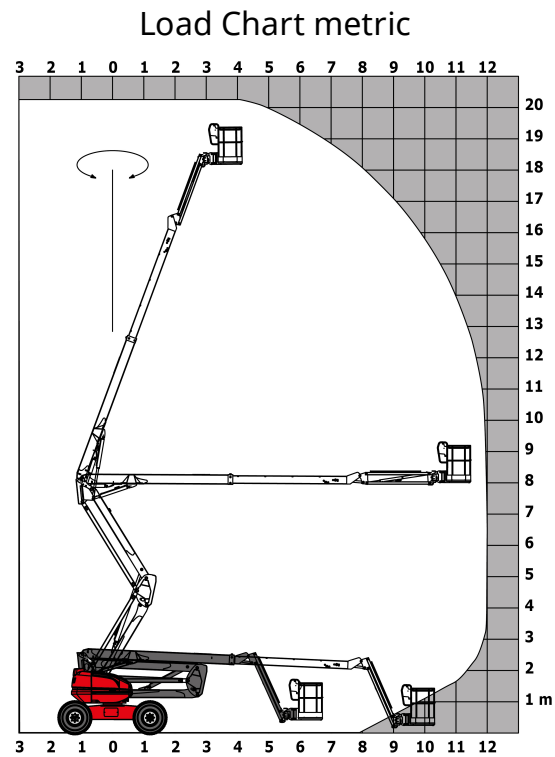
---



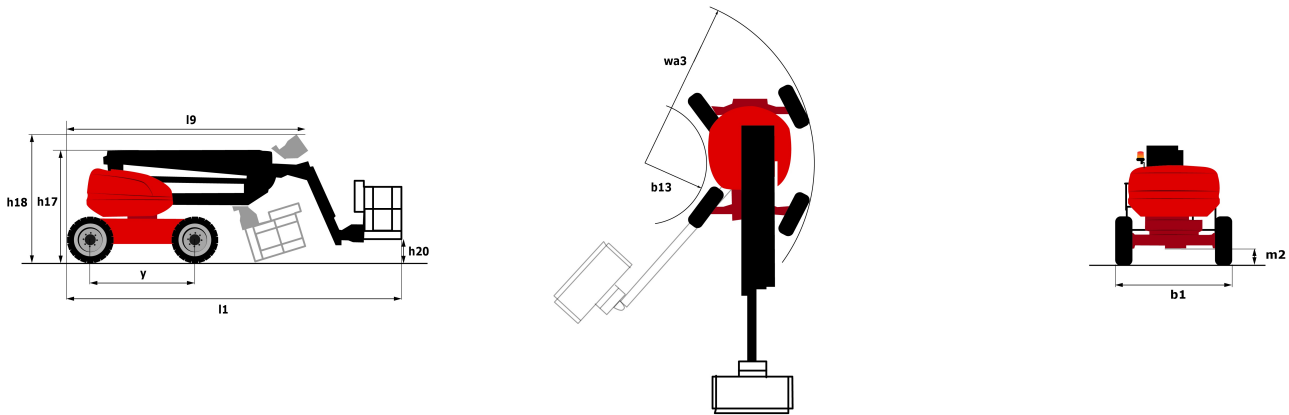
Capacities		Metric
Working height	h21	20.28 m
Platform height*	h7	18.28 m
Max. outreach	l4	12 m
Overhang	l5	8 m
Pendular arm rotation (bottom)		66 °
Platform capacity	Q	230 kg
Turret rotation		355 °
Platform rotation (right / left)		90 ° / 90 °
Number of people (inside / outside)		2 / 2
Weight and dimensions		
Platform weight*		10050 kg
Platform dimensions (length x width)	lp / ep	2.1 m x 0.8 m
Overall width	b1	2.4 m
Overall length	l1	8.42 m
Overall height	h17	2.71 m
Overall length (stowed)	l9	6.21 m
Overall height (stowed)	h18	2.85 m
Floor height (access)	h20	0.4 m
Counterweight offset (turret at 90°)	a7	0.11 m
Internal turning radius (over tyres)	b13	1.53 m
Outer turning radius	Wa3	4.17 m
Ground clearance at centre of wheelbase	m2	0.44 m
Wheelbase	y	2.4 m
Performances		
Drive speed - stowed		4.7 km/h
Drive speed - raised		0.8 km/h
Gradeability		40 %
Permissible leveling		5 °
Wheels		
Tyres type		Solid Tyres Cured-On
Drive wheels (front / rear)		2 / 2
Steering wheels (front / rear)		2 / 2
Braking wheels (front / rear)		0 / 2
Engine		
Engine brand / model / norm		Kubota - V2403-M - Stage 3A
I.C. Engine power rating / Power (kW)		45 Hp / 34.1 kW
Miscellaneous		
Ground Pressure		20.65 daN/cm²
Hydraulic Pressure		335 Bar
Hydraulic tank capacity		80 l
Fuel tank		78 l
Vibration on hands/arms		2.5 Nm
Daily consumption **		7.96 l
Standards compliance		
This machine is in compliance with:		European directives: 2006/42/EC- Machinery (revised EN280:2013) - 2004/108/EC (EMC) - 2006/95/EC (Low voltage)

\*\* According to "REDUCE cycle"

# Load chart

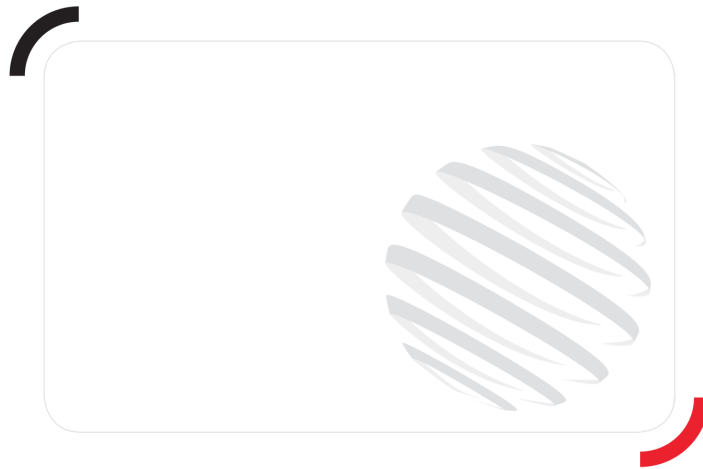


# Dimensional drawing



# Equipment

Standard
230V Predisposition
4 simultaneous movements
4 wheel drive
4 wheel steer with crab mode
Active oscillating front axle
Audible alarm and illuminated indicator lamp (leveling, overload, lowering)
Backup electrical pump
CAN bus technology
Dead man pedal
Differential locking on rear axle
Emergency stop button in platform and on frame
Fuel gauge with low level indicator
Galvanized basket 2,100 mm
Hour meter
Management via engine speed bearing
Proportional controls
Rear axle with limited slip differential
Optional
Air predisposition
Beep on every movement
Beep upon travel
Catalytic cleaner
Coded anti-start
Continuous turret rotation
Extreme cold oil
Onboard generator (3,5 or 5 kW)
SMS : Safe Man System
Screen protection on the lower box control
Turret cover with key lock
Water heater
Working light



Siège Social

430 rue de l'Aubinière - 44150 Ancenis Cedex - France

Tel: +33(0)2 40 09 10 11 - Fax: +33 (0)2 40 09 10 97

[www.manitou.com](http://www.manitou.com)



This brochure describes versions and configuration options for Manitou products which may be fitted with different equipment. The equipment described in this brochure may be standard, optional or not available depending on version. Manitou reserves the right to change the specifications shown and described at any time and without prior warning. The manufacturer is not liable for the specifications given. For more information, contact your Manitou dealer. Non-contractual document. Product descriptions may differ from actual products. List of specifications is not comprehensive. The logos and visual identity of the company are the property of Manitou and may not be used without authorisation. All rights reserved. The photos and diagrams contained in this brochure are provided for information only.

MANITOU BF SA - Limited company with board of directors - Share capital: 39,547,824 euros - 857 802 508  
RCS Nantes